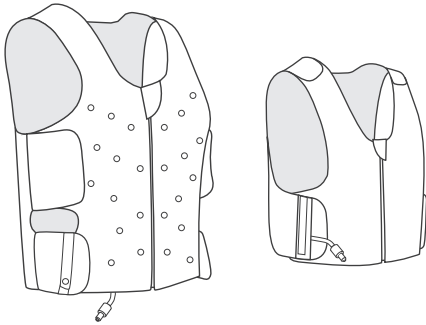


CARE INSTRUCTIONS



Squeeze deep pressure vest



The pressure vest can be wiped with a damp cloth or hand washed with mild soap in cold-lukewarm water. Air-dry in a shaded place. Before you start cleaning your vest, disconnect the hand pump with the quick release valve, so that no water can accidentally get into the vest.

DO NOT machine wash or tumble dry.

DO NOT wash with detergent, solvents or hot water.

DO NOT dry clean or iron.

DO NOT hang garment on radiators, expose to flame or use artificial heat to dry.

DO NOT stitch through or make alterations to the pressure vest.

DO NOT sew, stitch or mend. Keep away from sharp objects.



Squeeze hooded top



Before you wash your hooded top, detach your pressure vest from the hooded top and empty the pockets. Wash inside out with similar colours on a delicate machine wash cycle with the water temperature not exceeding 30 degrees. Air-dry in a shaded place.

DO NOT bleach.

DO NOT tumble dry.

Hand pump and air tubing

The pump and air tubing can be wiped clean with micro fibre cloth.

Do not submerge the pump in water.

Extension straps

The extension straps can be wiped with a damp cloth or hand washed with mild soap in cold-lukewarm water. Air-dry in a shaded place.