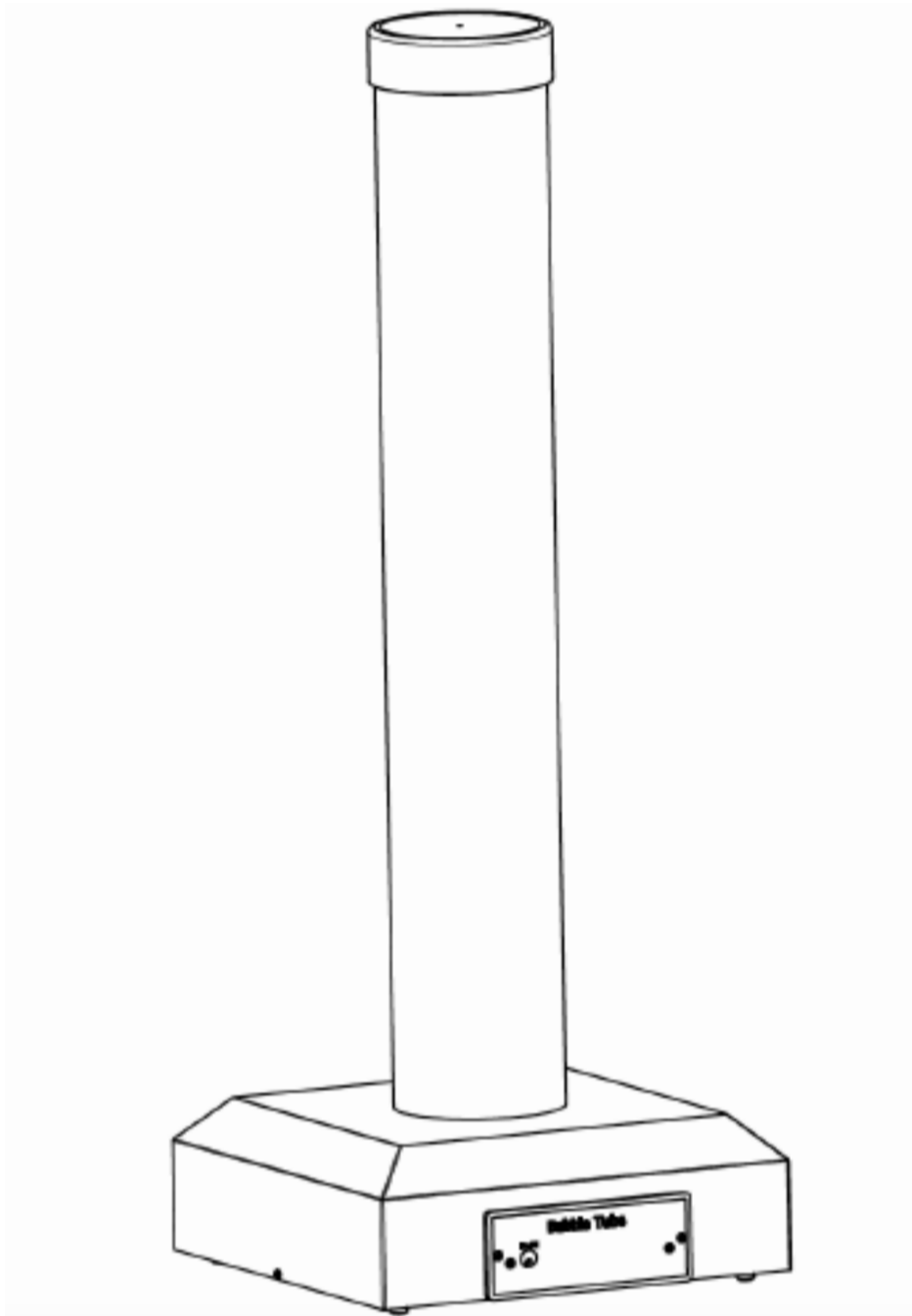


Calming LED Bubble Tube

SP8371



User Manual

50101-2-3
July 2022



Contents

Warnings	3
Description	3
Includes	3
Setting	4
Instructions	4-5
Water Changing Schedule	6
Guarantee	7
Contact	8

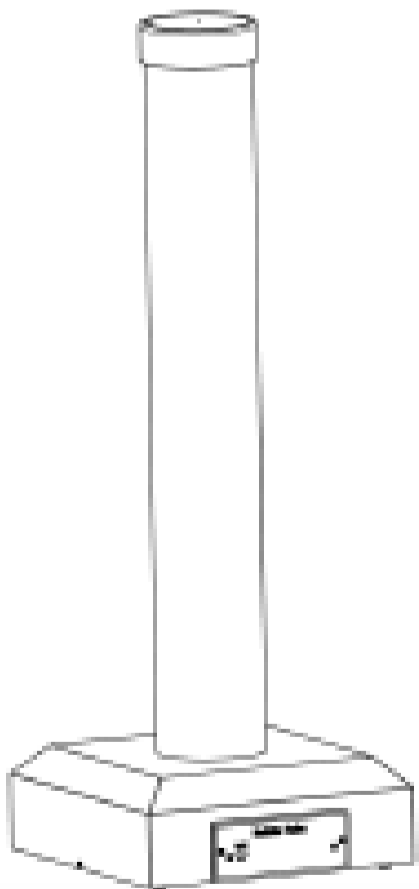
Warnings

- * This product is designed for users with special needs. Adult supervision is required during use at all times.
- * For indoor use only. The equipment uses a mains power supply.
- * We suggest a Wall Bracket EQ7218 (sold separately) to stabilize the Bubble Tube.
- * Never use abrasive cleaning pads to clean this item. Do Not use any solvent such as mineral spirits or chlorine based products. Use a soft cloth and mild detergent to clean the exterior of the tube. Always unplug the power cord when cleaning.

Description

Calm yourself as you watch the colors change and feel the gentle vibration of the Calming LED Bubble Tube. Watching the bubbles rise helps those who are overstimulated to calm and those who are under-stimulated to respond. The LED light never needs replacement. Attach the bubble tube to the wall with the Bubble Tube Wall Bracket (EQ7218 sold separately) for added stability and safety. Can also be placed inside our SensaSoft™ Corner Platform to create a cozy, cushioned sensory area. This bubble tube and its accompanying bracket are the perfect addition to your classroom, sensory room or playroom.

Includes



Power Adapter



Power Cord

Setting Up

Remove packaging and protective film from the column. Once the column is filled with water, it will be difficult to move. Place the column on level flooring and close to an electrical outlet. If using the wall bracket, place next to a wall.

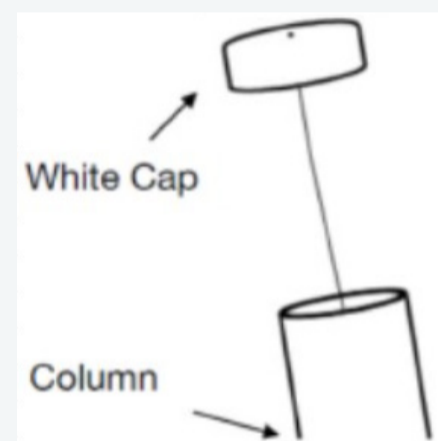
AVOID direct sunlight to discourage algae growth.

Please refer to the included Instructions for filling your Calming LED Bubble Tube.

Instructions

Filling the Bubble Tube

- 1** Before filling or emptying water from the bubble tube, unplug the bubble tube from the electrical outlet. Remove the white cap and pour distilled water into the column using a bucket.



Water Quality

- 2** Water born bacteria can easily develop in water. We strongly recommend the use of BCB additive (MS3707). Pour 1 oz. per 36" of bubble tube directly into the column once a month or when the water is changed in the tube. BCB additive is formulated and based on the proven Bronopol Biocide. It restricts formation of green algae and prevents infection risks from general bacteria including Pseudomonas species and Legionella.

It is essential that water quality and cleaning guidelines are followed to ensure control of water borne bacteria and pump longevity. **Failure to do so may void the warranty and guarantee.**

We suggest a regular schedule of cleaning. A good idea would be to replace your water approximately every three months. However, if the water clouds sooner, this maybe need to be done more regularly.

DO NOT USE a chlorine based cleaning product on the column. It will make the acrylic column turn a cloudy color and become brittle.

Emptying Your Bubble Tube

3

You will need one 10 gallon bucket or two 5 gallon buckets and a Bubble Tube Pump and Hose (EX6109).

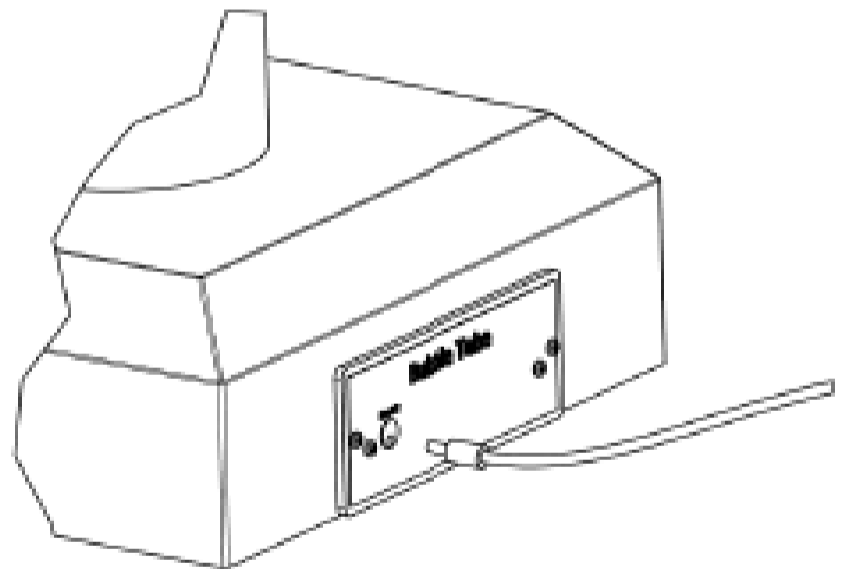
- Insert the long length of tube into the Bubble Tube. Make sure the tube reaches the bottom of the Bubble Tube
- Connect the other end of the tube to the foot pump
- Connect the short tube to the foot pump

The Arrow On The Pump Shows The Direction Of Water Flow When The Pump Is Being Used

- The other end of the short tube should be placed in a bucket or other suitable emptying vessel
- Press the foot pump (ensuring that it's on the floor) continuously until you detect water flow into the bucket
- At this point you will be able to stop pressing the foot pump as the siphon action will take over from the manual pumping

Operating Bubble Tube

- Insert the power adapter into the base of the Bubble Tube.
- Insert the power adapter into the power cord and plug into an electrical outlet.
- Turn on the Bubble Tube. It will scroll through an automatic color sequence.



Insert power adapter into base

Laminate Water Changing Schedule. Post near the Bubble Tube.

Water Changing Schedule	Initials	Date
January 01		
February 01		
March 01		
April 01		
May 01		
June 01		
July 01		
August 01		
September 01		
October 01		
November 01		
December 01		

Guarantee

CONDITIONS OF GUARANTEE

This guarantee is in addition to and does not in any way affect any statutory or other rights of consumer purchasers. If within the applicable guarantee period (as shown in 8 below) the appliance proves to be defective by reason of faulty design, workmanship or materials, we undertake subject to the following conditions to have the defective appliance (or any part or parts thereof) repaired or at our discretion replaced free of charge.

1. The appliance shall have been purchased and used solely in accordance with Standard operating instructions and the technical and/or Safety Standards required in the country where this appliance is to be used
2. All inquiries must be through such dealers. For appliances used in the UK., U.S.A., Channel Islands, Isle of Man, and Republic of Ireland the appliance should be returned together with this guarantee and proof of purchase promptly on being found defective, at the purchasers risk and expense, to the authorized dealer from whom the appliance was purchased.
3. This guarantee shall not apply to damage caused through fire, accident, misuse, Wear and tear, neglect, incorrect adjustment or repair, to damage caused through where this appliance is used, or to damage occurring during Installation, adaptation, modifications, or use in an improper manner or inconsistent with the technical and/or safety standards required in the country transit to or from the purchaser.
4. If at any time during the guarantee period any part or parts of the appliance are replaced with a part or parts not supplied or approved by us or of an objective quality safe and suitable for the appliance, or the appliance has been dismantled or repaired by a person not authorized by us, the purchaser shall not be entitled to any rights and/or remedies under this guarantee.
5. The purchaser sole and exclusive remedy under this guarantee against us is for the repair (or at our discretion the replacement) of the appliance or any part or parts and no other remedy, including, but not limited to, incidental or consequential damage or loss of whatsoever nature shall be available to the purchaser.
6. This guarantee shall not apply to lamps, batteries, color filters, cabinet parts or any other parts of a limited natural life.
7. Our decision on all matters relating to complaints shall be final. Any appliance or Defective part which has been replaced shall become our property until paid for in full.
8. The guarantee period applicable to all new appliances shall be 24 months.

Technical

The Passive Bubble Tube is a low voltage device using a power supply that is double insulated. A class 2 device does not require portable appliance testing. We do however suggest an annual visual inspection looking for any damaged parts.

Electrical data

Supply Voltage	110/240	AC
Power Supply Primary Voltage	110/240	AC
Power Supply Secondary Voltage	12	DC
Power Supply Current rating	3	Amp
Power Supply Plugtop Fuse - UK	3	Amp
Working Load Current	1.6	Amp
Power Supply Compliance	EN - FCC	

Complies to:
BS EN 60355-1
Generic EMC standards -
Emission standard for residential, commercial and light-industrial environments

The Calming LED Bubble Tube power supply is fitted with a 3 Amp fuse. Disconnect the main power supply before replacing the fuse.

Column - 60"L x 6" Diameter
(1524mm x 152.4mm Diameter)
Base - 15.7"L x 15.7" x 5.5"H
(398.8mm x 398.8mm x 139.7mm)
Weighs 23 lbs. ((10.4 KG)

Disclaimer

No part of this manual may be reproduced in any form or by any means (graphic, electronic or mechanical, including recording, taping, photography or information retrieval system) without express written permission of the publisher of this material.
All information is correct at date of publication.



fun & function
EMPOWERING DIFFERENT®

PO Box 11, Merion Station, PA 19066

QUESTIONS? call us at 800-231-6329 or email us at customercare@funandfunction.com.
We are committed to going above and beyond to address your questions, ideas and feedback.



Spacekraft copyright July 2022